

BIKE RENTAL AND BIKE SERVICE

If you want to rent a bike for your stay, use the table below to find your optimal frame size and indicate it when ordering. The bikes are delivered on Wednesday at 08:00 pm and will be picked up on Saturday at 16:00. Saturday. During the stay the bikes can be stored in a locked room.

The included insurance covers damage to a third part (personal or property damage). Damage to the rented bicycle is a matter between the lessor and the lessee and the lessee will have to pay for reparation of the bicycle (only the price for spare parts, unless the bicycle is totally damaged). Theft of the bicycle and loose parts are not covered, e.g. saddle bag and cycle computer. Remember to check your own insurance regarding cover for yourself and your rental bike. The hotel has locked rooms for bicycle storage.

SIZES

See the table below.

Frame Size	42	44	46	50	51	53	55	56	57	59	61
Riders Height - CM	148-158	159-164	164-169	168-171	170-174	173-177	178-182	180-185	184-189	189-194	194-...

The bikes will be adjusted according to the individual rider's measurements before delivery. It is therefore mandatory to state height and inseam measurements (cm) when ordering bicycle hire.

ALL-INCLUSIVE PACKAGE INCLUDES

Breakfast, lunch and dinner buffet with drinks for meals (local wine, beer, soda or mineral water).
Local spirits, wine, beer, soda and mineral water, bar service at 10.00-24.00 (designated bars/times).
Breakfast buffet at 07.45-10.30. Lunch buffet at 13.00-15.00. Dinner buffet at 18.45-21.30.
Hot and cold snacks are served at 11.00-18.00 from the hotels Pizzaria.
Other Times for the restaurant and bars can be given on arrival at the hotel.

FLIGHTS AND ARRIVAL

Individual arrival and departure from Mallorca on May the 06th and 10th day.
Latest arrival at the hotel at 12.00 hours. First ride starts at 13.00 hours. Check-in at the hotel from 14.00 hours.
Latest check-out from the hotel 12.00.
Be aware that flight prices vary according to demand and depending on the time of booking.

PROGRAM

Wednesday 06 May 2026

Individual arrival. Latest arrival at 12:00 hours. Possibility to change clothes before today's cycling challenge. After the trip, we can check in at the hotel (from 15:00). Dinner at the hotel from 18.30.

Thursday 07 May 2026

Breakfast. Cycling Training.
Dinner at the hotel from 18.30.

Friday 08 May 2026

Breakfast. Cycling Training
Dinner at the hotel from 18.30.

Saturday 09 May 2026

Breakfast, after which we cycle today's route. The bikes will be picked up at the hotel at 16:00 hours.
Dinner at the hotel from 18.30.

Sunday 10 May 2026

Breakfast and check-out before 12:00.

Bike Tour Mallorca

May 6th - May 10th 2026



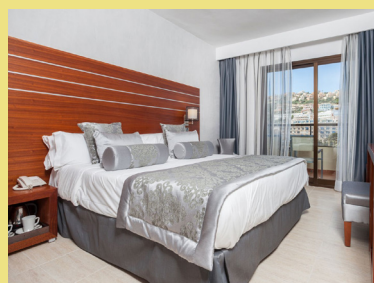
TEAM RYNKEBY EUROPE

Offering a nice climate, beautiful nature and a varied landscape, Mallorca is a unique island for biking with lots of exciting hills but also flat areas that wind through cozy villages. That makes Mallorca the perfect place to train both hill and road riding.

We are staying at Hotel Zafiro Rey Don Jaime, which is located in Santa Ponsa, enjoying an “all-inclusive” package.

4-star hotel just a 200 meters from the beach of Santa Ponsa and approx. ½ hour drive from Palma de Mallorca Airport. The hotel offers an outdoor swimming pool, free sunbeds, buffet restaurant, pool bar and free Wi-Fi. The rooms have air conditioning, TV, safe box and balcony. The stay is all-inclusive.

Hotel Zafiro Rey Don Jaime Santa Ponsa
Carrer Gran Via Puig Major, 4, 07180 Santa Ponça,
Illes Balears, Spanien



TRAVEL FACTS

ARRIVAL/DEPARTURE

Wednesday May 06th - Sunday May 10th 2026

4 nights is standard. It is possible to book fewer or more nights. Please contact Ørslev Travel.

Per pers. in shared double room	€ 448,- DKK 3.326,-
Per pers. in single room	€ 571,- DKK 4.245,-

THE PRICE INCLUDES:

- Room for 4 nights
- All-inclusive at the hotel
- 4 cycling days (1st day May 6th)
- All applicable taxes and fee

Flight and transfer to/from the hotel is not included in the package price.

OPTIONAL EXTRAS PER PERSON

BIKE RENTAL INCLUDING INSURANCE:

Road Bike 4 days **Prices will be available in early October**

ADDITIONAL NIGHTS:

Per night per person in shared double room	€ 108,- DKK 805,-
---	-----------------------------

Per night per person in single room	€ 142,- DKK 1.062,-
-------------------------------------	-------------------------------

REGISTRATION AND PAYMENT

Online sign up and bike reservation by latest November 1st 2025 on www-orslev-cykelrejsler.dk

The deposit is 40 % of the price of the trip and must be paid 2 days after booking. Once the deposit has been paid, the order is considered binding. The remaining amount is paid 50 days before departure.

Questions can be asked on e-mail to trine@orslevrejsler.dk or phone +45 6163 4215